

# Windchill® Web Parts for SharePoint®

Gain Immediate Access to Accurate, Critical Product Information within a SharePoint Environment

Accelerating time-to-decision is a growing imperative for manufacturers of all sizes. Making faster, smarter decisions is a critical element of cost- and time-efficient product creation. Windchill Web Parts for SharePoint accelerates decision-making by providing a single, collaborative view of both Windchill data and other critical product information.

Cost containment, process and task efficiencies, competitive pressures – and more – all demand accurate and up-to-date information. Whether it's company executives, engineers, manufacturing operations, or upstream suppliers – everyone must monitor status and changes, review parts and product designs, and access up-to-date, decision-critical documents. Windchill Web Parts for SharePoint brings all this information into a familiar SharePoint interface. Having a central point of access lowers costs, improves productivity, and simplifies processes.

## Key Benefits

### Finish Projects Faster and at Lower Cost

Windchill Web Parts for SharePoint becomes a strong element of project efficiency and cost containment. Reviews happen more quickly. Decisions are made and communicated without delay. Budgeting is more accurate. Planning is more efficient.

### Present a Single Point of Decision-Making Knowledge

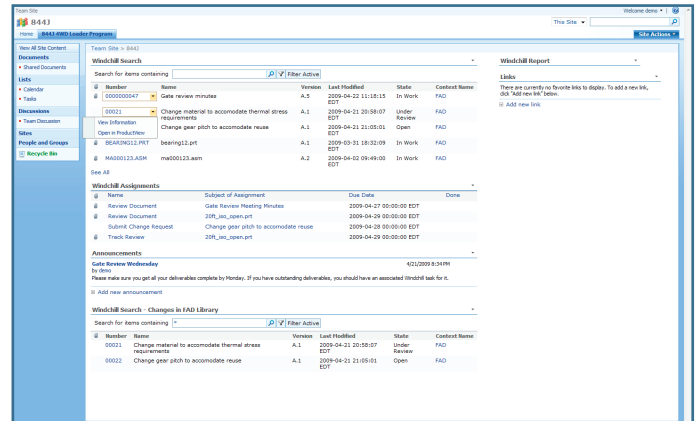
Decision-makers gather their critical knowledge from a broad universe of systems and applications. With Windchill Web Parts for SharePoint, that information is presented in a single location – your SharePoint Web pages.

### Broaden Collaboration

Windchill Web Parts for SharePoint makes all relevant and approved information available to additional participants and stakeholders in the product development lifecycle.

### Improve Worker Productivity

Productivity increases as impediments to collaboration are removed. Windchill Web Parts for SharePoint enables this productivity boost by presenting a single environment for collaboration, revision, review and approval.



Multiple Windchill Web Parts can be added to a SharePoint page.

## Streamline the Process

Eliminate the delays, the lack of synchronization, and the impediments to collaboration that slow projects and increase costs.

## Features

### Executive Dashboard

- Provide an essential decision tool for executive leadership and engineering managers
- Deliver a single, comprehensive view of Windchill Business Reports, together with reports from ERP, sales and corporate finance systems
- Immediately notify managers when their approval is needed

### Searches

- Easily retrieve critical product information that impacts decision-making and product completion
- Simplify finding precise information, using flexible search parameters
- Use “sticky searches” of important data to save and share often-used search parameters

**Full Application Interaction**

- Interact with many Windchill modules alongside other PTC products as well as enterprise applications like ERP
- Enable multi-application visibility
  - View information in both ERP and PLM to optimize the production schedule
  - Monitor order status for critical parts
  - Investigate the overall impact of a design change
  - Review vendor information in multiple systems before approving a selection
- Compatible with Windchill ProductPoint®

**Markup and Revision**

- View and mark up models using the built-in ProductView capabilities
- Check-out, revise and resubmit documents to the Windchill server in conjunction with Windchill Desktop Integration

**Authentication**

- NTLM Authentication imposes a high level of security within the Windchill Web Parts for SharePoint environment
- Single sign-on simplifies cross-application access
- Based on permission levels you define, you can grant access across organizations, including Program Management, Finance, Marketing, OEMs and Suppliers

**Simple Installation and Setup**

- Documentation provides specific help for system administrators who either don't know SharePoint, or don't have time to develop familiarity with the SharePoint environment

**Platform Specifications**

- Microsoft Office SharePoint® Server (MOSS) 2007
- Windchill PDMLink® 9.1 M010, Windchill ProjectLink™ 9.1 M010
- MS Windows® 2003 server
- Windows SharePoint Services 3.0 SP1 (x86) (x64)

For the most up-to-date platform support information, please visit: [www.ptc.com/partners/hardware/current/support.htm](http://www.ptc.com/partners/hardware/current/support.htm)

NOTE: The timing of any product release, including any features or functionality, is subject to change at PTC's discretion.

© 2010, Parametric Technology Corporation (PTC). All rights reserved. Information described herein is furnished for informational use only, is subject to change without notice, and should not be construed as a guarantee, commitment, condition, or offer by PTC. PTC, the PTC logotype, Windchill ProductPoint, Windchill, Windchill PDMLink, Windchill ProjectLink, ProductView and all PTC product names and logos are trademarks or registered trademarks of PTC and/or its subsidiaries in the United States and in other countries. All other product or company names are property of their respective owners.